

## Critical Care PGY-2 Pharmacy Residency Program

### Hospital and Pharmacy Department Overview

Brigham and Women's Hospital, located in Boston's Longwood Medical Area, is a 836-bed nonprofit teaching affiliate of Harvard Medical School and a founding member of Mass General Brigham Inc. BWH was named to the 2025-2026 *U.S. News & World Report* Best Hospitals Honor Roll. BWH was ranked in 12 of the 15 eligible specialties including #1 in Obstetrics & Gynecology, #3 in Diabetes & Endocrinology, #3 in Cancer with Dana Farber Cancer Institute and #4 in Rheumatology. The Department of Pharmacy provides services to inpatient, outpatient, and satellite clinic locations throughout the Boston area. The department is regarded as an innovator and leader in medication safety technology, clinical information systems, and clinical pharmacy services at the local and national level.



### General Information

The Department of Pharmacy at Brigham and Women's Hospital offers a specialized residency in critical care pharmacy practice. This one-year ASHP accredited program is designed to provide advanced training in the area of critical care pharmacotherapy and research.

### Program Fundamentals

The primary emphasis of the critical care residency is to develop clinicians with expertise in pharmacotherapy of critical care patient management. Over the course of the year, the resident will gain experience in the management of critical care patients, lead a comprehensive research project, strengthen his or her communication skills through formal and informal presentations and interactions with other healthcare providers in a variety of settings, and participate in critical care and pharmacy-related interdisciplinary hospital committees. In addition, the resident will enhance his or her teaching skills by precepting pharmacy practice residents and students on critical care rotations.

Residents will rotate through at least seven different intensive care units throughout the hospital in addition to the emergency department.

The PGY2 Critical Care Residency program is a yearlong experience running from July 1st to June 30th. Residents will receive a stipend of ~\$65,900, and will be eligible for health, dental, vision and life insurance as well as a 403(b) retirement plan.

For additional information on resident learning experiences, additional required activities, application process, and other specific program details please see the [Pharmacy Residency Manual](#) or check us out on Twitter @BrighamPharmacy. For more information on other programs or the pharmacy department please see the main [BWH Pharmacy Residency page](#).

## Critical Care Rotations and Preceptors

Required Learning Experiences	Preceptors A full list of pharmacist preceptors at BWH with photos and titles can be found <a href="#">here</a> .
Medical ICU	Kevin Dube PharmD, BCCCP, BCPS; Rachel Winner PharmD, BCCCP; Skyler Starkel, PharmD, BCCCP
Burn/Trauma ICU	Lydia Ware PharmD, BCCCP, BCPS
Coronary Care ICU	Dareen Kanaan, PharmD, MPH, BCCP, BCPS; Evan Wright, PharmD, BCCCP
Neuromedicine ICU	Patricia Cyrus PharmD, BCPS; Michael Schontz PharmD, BCCCP, BCPS; Skyler Starkel, PharmD, BCCCP
Infectious Diseases	Jeffrey Pearson PharmD, BCIDP; David Kubiak PharmD, BCIDP, BCPS; Brandon Dionne PharmD, BCPS, AAHIVP
Emergency Department	Kaylee Marino PharmD, BCEMP, BCCCP, BCPS; Christine Kim, PharmD, BCCCP; Reem Alsultan, PharmD, BCEMP, BCPS, DABAT; Karlie Knobloch, PharmD, BCEMP; Meghan Laquerre, PharmD, BCCCP
Medication Safety	Heather Dell'Orfano PharmD, CACP, CPPS, BCPS, AQ-Cardiology; Mary Dube, PharmD, BCCCP, BCPS
Advanced Integrated Clinical Pharmacy Practice	Kaitlin Crowley PharmD, BCCCP, BCPS; Jeremy DeGrado, PharmD, BCCCP; Lydia Ware, PharmD, BCCCP, BCPS
Surgical ICU*	Robert Dannemiller PharmD, BCCCP, BCPS
Mixed Medical-Surgical ICU*	Margo DeLisle PharmD, BCPS, BCCCP; Felicia Wang, PharmD, BCCCP
Cardiac Surgery ICU*	Evan Wright, PharmD, BCCCP; Felicia Wang, PharmD, BCCCP
Thoracic Surgery ICU*	Gaspar Hacobian PharmD, BCPS
*These are selective required rotations. Residents will select one rotation from Group 1 (Surgical ICU or Mixed Medical Surgical ICU) and one rotation from Group 2 (Cardiac Surgery ICU or Thoracic ICU).	
Elective Learning Experiences	Preceptors A full list of pharmacist preceptors at BWH with photos and titles can be found <a href="#">here</a> .
Neonatal ICU	Kaylee Goodrich, PharmD, BCPS
Neurosurgical ICU	Michael Schontz PharmD, BCCCP, BCPS; Skyler Starkel, PharmD, BCCCP
Hemostatic/Antithrombotic Stewardship	Dareen Kanaan, PharmD, MPH, BCCP; Kaitlin Crowley, PharmD, BCPS, BCCCP
Solid Organ Transplant (Heart)	Mia Kim PharmD, MSc, BCPS
Allergy and Immunology	Kathleen Marquis PharmD, PhD, BCPS
<ul style="list-style-type: none"> <li>Internal candidates will select 2 elective learning experiences and external candidates will select 1 elective learning experience</li> <li>Any required experience may be repeated as an elective experience with different learning objectives.</li> <li>Any selective required experience that is not chosen as a required rotation can be selected as an elective rotation.</li> <li>All clinical learning experiences listed above are one month (4-5 week) rotations. Some elective experiences may be shorter depending on preceptor availability and the resident specific goals.</li> </ul>	

### Longitudinal Experiences (Preceptor based on Rotation Assignment)

- ♦ Research Project
- ♦ Committee Membership
- ♦ Medication Safety and Quality Improvement
- ♦ Formal Presentations and Departmental Contributions

All longitudinal learning experiences listed above are 52 weeks in duration to be completed throughout the residency year. Please see the Critical Care Appendix of the [Pharmacy Residency Manual](#) for additional information on rotation structure

## Current BWH Critical Care PGY-2 Residents



**Elise Chan, PharmD**

PGY1: Brigham and Women's Hospital,  
Boston, MA



**Ahmed Albakheet, PharmD**

PGY1: Brigham and Women's Hospital,  
Boston, MA



**Nicholas McPadden, PharmD**

PGY1: Lowell General Hospital,  
Lowell, MA

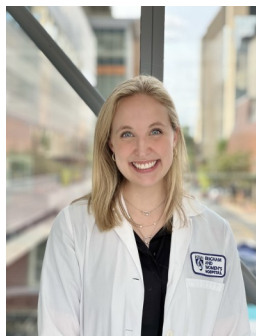
## Previous BWH Critical Care PGY-2 Residents

### 2024-2025



**Amy Janowski, PharmD**

Clinical Pharmacist  
Brigham and Women's  
Hospital, Boston, MA



**Bridget Betts, PharmD**

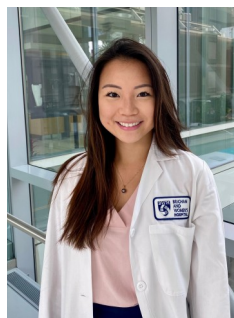
Clinical Pharmacist  
Brigham and Women's  
Hospital, Boston, MA



**Nihad Medar, PharmD**

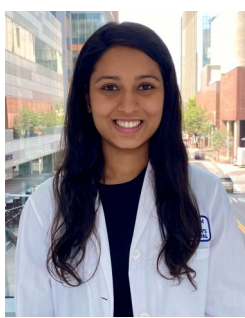
Clinical Pharmacist  
Brigham and Women's  
Hospital, Boston, MA

### 2023-2024



**Felicia Wang, PharmD,  
BCCCP**

Clinical Pharmacist  
Brigham and Women's  
Hospital, Boston, MA



**Nandini Patel, PharmD,  
BCCCP**

Critical Care Clinical  
Pharmacy Manager—Mixed  
Medical/Surgical ICU  
Mount Sinai Hospital  
New York, NY



**Shayma Alzaidi, PharmD**  
Pharmacy Fellow in Medication  
Safety Outcomes Research &  
Pharmacy Informatics,  
Brigham and Women's Hospital,  
Boston, MA

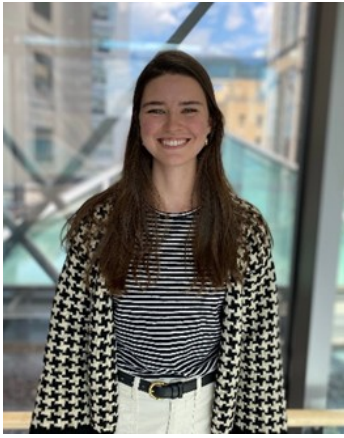


**Skyler Starkel, PharmD, BCCCP**

Clinical Pharmacy Specialist  
Brigham and Women's Hospital,  
Boston, MA



## 2022-2023



**Rachel Winner, PharmD, BCCCP**  
Clinical Pharmacy Specialist  
Brigham and Women's Hospital,  
Boston, MA

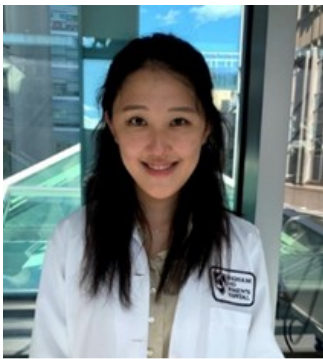


**Abdulmajeed Alshehri, PharmD, BCCCP**  
Clinical Assistant Professor, Clinical Pharmacist  
King Saud bin Abdulaziz University for Health  
Sciences, King Abdulaziz Medical City,  
Riyadh, Saudi Arabia

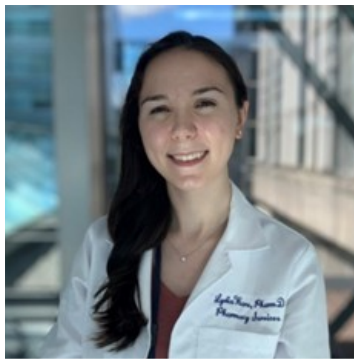


**Meghan Cook, PharmD, BCCCP**  
Clinical Pharmacy Specialist  
PGY2 Emergency Medicine  
Program Coordinator  
Brigham and Women's Hospital,  
Boston, MA

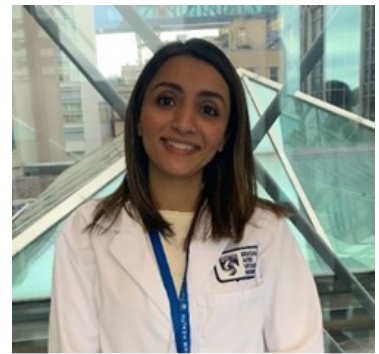
## 2021-2022



**Christine Kim, PharmD, BCCCP**  
Senior Clinical Pharmacy Specialist,  
PGY2 Emergency Medicine  
Program Coordinator  
Brigham and Women's Hospital, Boston, MA



**Lydia Ware, PharmD, BCPS, BCCCP**  
Senior Clinical Pharmacy Specialist  
PGY2 Critical Care  
Program Coordinator  
Brigham and Women's Hospital, Boston, MA



**Maha Assadoon, PharmD,  
BCPS, BCCCP**  
Clinical Pharmacist, King Abdulaziz  
Medical City,  
Riyadh, Saudi Arabia

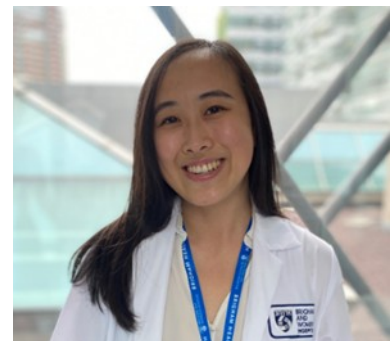
## 2020-2021



**Mohammed Aldhaeefi,  
PharmD, FACC, BCCCP**  
Pharmacy Operations Manager  
Anne Arundel Medical Center  
Annapolis, MD



**Abby Jane (A.J.) Golash,  
PharmD, BCCCP**  
Clinical Pharmacy Specialist  
Maine Medical Center, Portland, ME



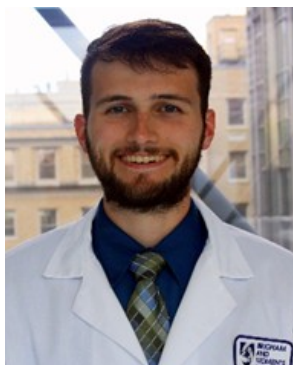
**Helen Wang, PharmD, BCCCP**  
Cardiothoracic ICU Pharmacist New  
York Presbyterian Brooklyn Methodist  
Hospital, New York, NY

## 2019-2020



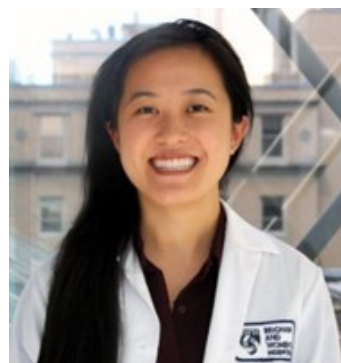
**Nicholas Hunt, PharmD, BCCCP**

Clinical Specialist, Critical Care,  
Rush University Medical Center,  
Chicago, IL



**Brian Schuler, PharmD, BCCCP**

Clinical Pharmacist, Critical Care  
Henry Ford Hospital,  
Detroit, MI



**Lena Tran, PharmD, BCCCP**

Clinical Pharmacist, Critical Care  
Residency Program Director  
Advent Health Central Florida  
Kissimmee, FL

## 2018-2019



**Melanie Goodberlet  
PharmD, BCPS,  
BCCCP**

Senior Clinical Pharmacy  
Specialist,  
Brigham and Women's  
Hospital, Boston, MA

**Abdulrahman Alshaya  
PharmD, MBA, FCCP, BCCCP,  
BCPS**

Assistant Dean of Clinical Affairs,  
College of Pharmacy in King Saud  
bin Abdulaziz University for Health  
Sciences,  
Riyadh, Saudi Arabia



## 2017-2018



**Kaitlin Crowley PharmD,  
BCCCP, BCPS**

Senior Clinical  
Pharmacy Specialist,  
PGY2 Critical Care Program  
Coordinator  
Brigham and Women's  
Hospital, Boston, MA



**Robert Dannemiller  
PharmD, BCCCP, BCPS**

Senior Clinical  
Pharmacy Specialist,  
Brigham and Women's  
Hospital, Boston, MA



**Kevin McLaughlin  
PharmD, BCCCP, BCPS**

Senior Clinical  
Pharmacy Specialist,  
Brigham and Women's  
Hospital, Boston, MA



**Natasha Romero PharmD,  
BCCCP, BCPS**

Clinical Pharmacy Manager,  
Residency Program Director  
Memorial Healthcare System,  
Hollywood, FL



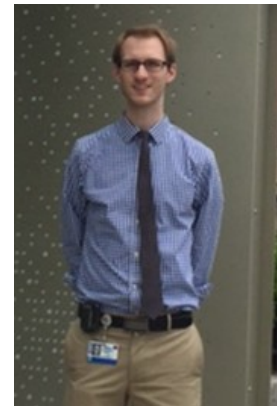
## 2016-2017



**Megan Barra PharmD, FNCS, FCCM,  
BCCCP, BCPS**  
Medical Director, Scientific Affairs,  
Marinus Pharmaceuticals  
Radnor, PA



**Mary Dube PharmD, BCCCP, BCPS**  
Senior Clinical Pharmacy Specialist,  
Brigham and Women's Hospital,  
Boston, MA



**James Schurr MD, PharmD**  
Cardiovascular Disease Fellow,  
Hospital of the University of Pennsylvania,  
Philadelphia, PA

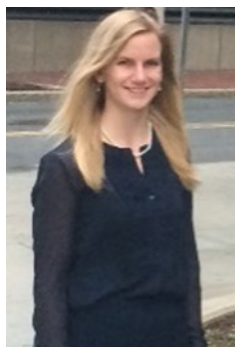
## 2015-2016

**Kevin Dube  
PharmD, BCCCP, BCPS**  
Senior Clinical Pharmacy  
Specialist,  
Brigham and Women's  
Hospital, Boston, MA



**Benjamin Hohlfelder  
PharmD, BCCCP, BCPS**  
Clinical Pharmacy Specialist  
in Critical Care,  
Cleveland Clinic,  
Cleveland, OH

## 2014-2015



**Rebecca Nashett PharmD,  
BCCCP, BCPS**  
Clinical Pharmacy Specialist, MICU  
University of Vermont,  
Burlington, VT



**Kimberly Terry PharmD, MS,  
BCCCP, BCPS**  
Clinical Pharmacy Manager,  
PGY1 Acute Care  
Residency Program Director  
University of Utah Health Care,



**Brianne Ritchie PharmD, MBA,  
BCCCP, BCPS**  
Critical Care Pharmacist  
Nebraska Medicine  
Omaha, NE

## 2013-2014



**James Gilmore PharmD,**  
**FCCM, BCCCP, BCPS**  
Pharmacy Manager, Cedars-Sinai Medical Center,  
Los Angeles, CA



## 2012-2013

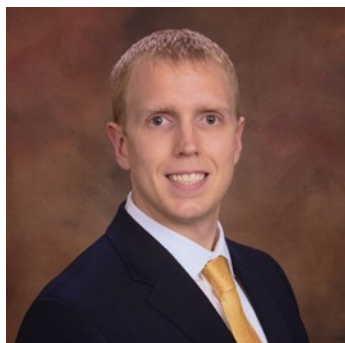


**Abdullah Alhammad**  
**PharmD, BCPS**  
Associate Professor of Clinical  
Pharmacy, King Saud University  
& Clinical Manager in Critical  
Care, Critical Care Residency  
Program Director, King Saud  
University Hospital



**Nicole Schroeder PharmD,**  
**BCCCP, BCPS**  
Associate Director, Medical Sciences  
Liaison, NYC/Long Island  
Respiratory, IPF/ILD  
Clinical Development and Medical  
Affairs  
Boehringer Ingelheim, Inc.  
Ridgefield, CT

## 2011-2012



**David Reardon**  
**PharmD, BCPS**  
Vice President,  
Pharmacy Contract and  
Program Services,  
Vizient Inc.

## 2010-2011

**Heather Torbic PharmD,**  
**FCCM, BCCCP, BCPS**  
Clinical Pharmacy Specialist in  
Critical Care, Cleveland Clinic,  
Cleveland, OH





# Critical Care PGY-2 Residency Leadership Team



**Residency Program Director**  
**Jeremy DeGrado PharmD, BCCCP**  
Clinical Pharmacy Manager  
[jdegrado@bwh.harvard.edu](mailto:jdegrado@bwh.harvard.edu)



**Residency Program Coordinator**  
**Kaitlin Crowley PharmD, BCCCP, BCPS**  
Senior Clinical Pharmacy Specialist, Critical Care  
[kecrowley@bwh.harvard.edu](mailto:kecrowley@bwh.harvard.edu)

## Critical Care PGY2 Residency Class of 2024



**Residency Program Coordinator**  
**Lydia Ware PharmD, BCCCP, BCPS**  
Senior Clinical Pharmacy Specialist, Critical Care  
[lrware@bwh.harvard.edu](mailto:lrware@bwh.harvard.edu)

## Department of Pharmacy Services

Brigham and Women's Hospital 75 Francis Street , Boston, Massachusetts 02115

Updated Dec 2025