



# BRIGHAM AND WOMEN'S HOSPITAL

## Neonatal Intensive Care Unit Parent Information Sheet

### Brain MRI for my preterm baby

➤ *What is a brain MRI?*

Magnetic resonance imaging (MRI) is a routine technique for taking detailed pictures of the brain. These pictures help us understand the structure of the brain and its development.

➤ *What will it involve?*

The scan will be done by a trained MRI technician during your baby's natural sleep. This will most likely occur at BWH, however the study might be obtained at Boston Children's Hospital. Your baby will lie on a bed that slides into the MRI scanner. He/she will wear earmuffs to reduce scanner noise, and will be wrapped in a special blanket to keep him/her still, safe, and comfortable.

➤ *Are there any risks?*

MRI is a safe, painless study with no known health risks. Unlike an X-ray or CT scan, there is no exposure to radiation. Babies do not require sedation for an MRI. Most babies, once swaddled and fed, sleep right through the MRI.

➤ *How long will it take?*

A typical scan takes around 45 minutes or a bit longer if your baby wakes up.

➤ *How will you make sure my baby is comfortable?*

Your baby will be fed and wrapped in a snug blanket prior to the MRI and will likely sleep through the study. If your baby wakes, he/she will be resettled. If he/she cannot be settled at any point, the scan will be stopped and your baby will come back to the NICU.

➤ *Who will be with my baby?*

A neonatal nurse will accompany your baby to the MRI. The nurse will observe your baby through a window during the MRI. Your baby's heart rate and oxygen level will also be monitored continuously during the MRI.

➤ *How will I get results of my baby's MRI?*

Your baby's medical team will work with the appropriate specialists to interpret the study results and discuss these with you. Because multiple specialists might contribute to the MRI interpretation, obtaining a final result might take several days.

➤ *What if I have questions?*

Please ask!! Your baby's medical team will be happy to answer any questions you may have.

### Steps for obtaining an infant brain MRI

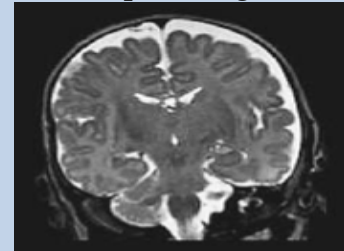
1) Feed and swaddle



2) Obtain study



3) Interpret images



**Neonatal  
Intensive Care  
Unit  
CWN Building,  
6<sup>th</sup> Floor  
75 Francis Street  
Boston, MA  
02115**

**617-732-5420**